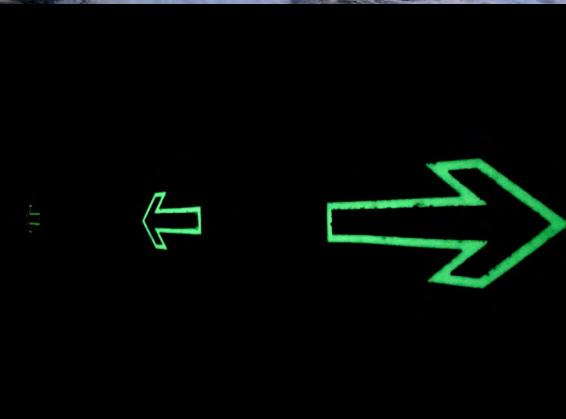




2017-2018 AMS[®] Drill Floor Solutions

AMS

Advanced Mat Systems



AMS continues to be on the forefront with our innovative proven product lines for the Oil & Gas, Marine, Commercial and General Consumer markets. Our exclusive line of high COF (co-efficient of friction) traction profiles ensure each step, is a safe step in the right direction. The AMS[®] collection of hardwearing polymers have been engineered for the drill floor and surrounding areas.

Did you know? Advanced Mat Systems was the first in the Oil & Gas market for:

- **Low Profile (LP)**—introduced as an alternate to studs. Low Profile provides high traction on drilling surfaces outside the rotary table area
- **Hybrid Package**—cost saving without compromise with our engineered polyurethanes (see page 5).
- **AMS[®] Color Sync**—ensures solid color throughout matting. Lesser grade products are susceptible wear, revealing what's below. When this happens the visual impact of Red Zones, Hazard Identification, etc are reduced.
- **Photo Luminescent Markings**—as operations take place 24 hours per day, we emboss glow-in-the-dark markings. Arrows for egress routes, nosing on treads or any other hazard identification. Illuminate the path of safety with AMS[®] difference.
- **Arctic Pad[®]**—the worlds only fully customizable heated rubber traction mat. Winterize any of our traction mat product line with heat eliminating snow and/or icy surfaces.
- **Arctic Treads**—the worlds only fully customizable heated rubber traction tread. Stairs are the highest risk of slips, trips and falls, especially in icy conditions. Remove the risk with customizable heated stair treads.
- **Arctic Ladder**— move personnel safely from level to the next in cold or harsh environments with our built-to-order heated ladders.

The foundation of our company is providing proven products that protect people. We continually strive headfirst with our research and development ensuring new innovations for all.

Advanced Mat Systems is Canadian corporation with headquarters in Calgary, Alberta Canada, with our manufacturing facility located in Alvin, Texas USA. All operations are ISO 9001:2008 compliant.

Contact us at 1-403-910-1492 or sales@advancedmatsystems.com

AdvancedMatSystems.com

TractionMat.com

ArcticPad.com

Products

Drill Floor Traction Matting	4
Drill Floor Traction Treads	4
Rotary Table Matting	4
AMS© Hybrid Drill Floor Traction Mat Packages	5
Setback / Pipe Racking Pads	5
Drainage Mats	5
FRP—Fiberglass Reinforced Polyurethane Mats	5
Hole Covers	5
T-Mats	5
Industrial Payload Pads	6
Industrial Anti-Fatigue Mats	6
Rotary Table Refurbishing	6
Drill Floor Built-to-Order Solutions	7
Dimensions	7
Traction Profiles	7
Polymer Choices	7
Value Added Options	7
Arctic Pad®	8
Arctic Tread	8
Arctic Industrial Anti-Fatigue Mat	8
The Arctic Pad® Difference	9

Services

Design	10
Engineering—Electrical	10
Control & Monitoring Systems	10
Global On-site Survey	11
Installation Supervision	11
Commissioning	11

**The Advanced Mat System® Drill Floor Product Line,
see page 7 for built-to-order options for any product.**

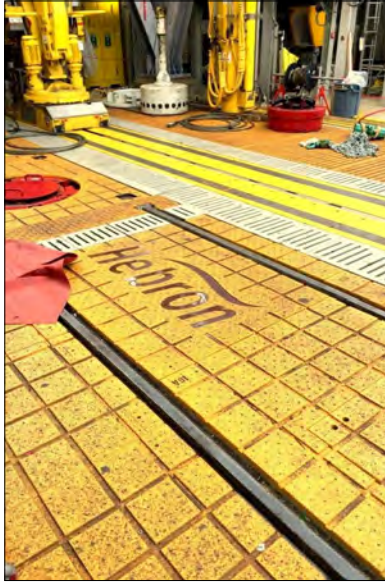
Drill Floor Solutions

Modernizing drilling operations, providing cost effective solutions through proven products engineered for drill floors. The Drill Floor product line is specifically designed with a high coefficient of friction (COF) for active work environments. Choose any of our value added options, to ensure the right mat every step of the way.



Choose from some of our standard Drill Floor Traction Mats or build-to-order (*see Page 7*).

DRILL FLOOR SOLUTIONS



Drill Floor Traction Matting

Extensively used throughout the drilling industry, purpose-built and engineered to improve safety of slips, trips and fall. AMS[®] Drill Floor Traction Matting delivers positive traction while aiding in drainage of drilling fluids.

- Chemical, corrosive and diesel resistant polyurethanes
- Fire-retardant properties
- Can easily be modified on site without special tools
- Built-to-order any size, shape or thickness

Typical Drill Floor package design includes:

- Either stainless steel studs & drainage channels, low profile or high profile traction
- Aggressive non-side aggregate coating
- AMS[®] Color Sync or Basic

AMS [®] Drill Floor Matting	Thickness (mm)	Polymer Type	Traction Profile Options
DF-TC90FR -Thickness-Traction Profile	19, 25, 30, 32 or Custom	TC90FR	SDC, LP, HP
DF-CS100FR -Thickness-Traction Profile	19, 25, 30, 32 or Custom	CS100FR	SDC, LP, HP

Traction Profiles: SDC—Stainless Steel Studs & Drainage Channels or LP-Low Profile or HP-High Profile



Stair Treads

Stairways are one of the highest risk areas for slip, trips & falls. AMS[®] Traction Treads provide safe footing in extreme areas.

- Easy installed on any surface
- Lateral mounting holes molded in each tread for ease of install
- Choose between stock sizes or built-to-order any size, shape or thickness

AMS [®] Stock	Thickness (mm)	Polymer Type	Depth (mm)	Available Widths (mm)	Traction Profile
ST-TC90FR-200 -Length-Traction Profile	10	XP	200	600, 750, 900, 1000, 1200	LP
ST-TC90FR-250 -Length-Traction Profile	10	XP	250	600, 750, 900, 1000, 1200	LP
ST-TC90FR-300 -Length-Traction Profile	10	XP	300	600, 750, 900, 1000, 1200	LP

Traction Profile: LP-Low Profile



Rotary Table Matting

Custom molded traction mats designed for a hazardous work area. This brand of Rotary Table Traction Matting (aka Safety Pad) has always outperformed the competition, due to the extremely robust and durable polymer, CS100FR.

Standard Rotary Table includes:

- Either stainless steel studs & drainage channels, low profile or high profile traction
- Aggressive non-side aggregate coating
- AMS[®] Color Sync or Basic
- Fire Retardant
- Chemical, Corrosive and Diesel Resistance

AMS [®] Rotary Table Matting	Thickness (mm)	Polymer Type	Traction Profile
RT-CS100FR -Thickness-Traction Profile	30, 32 & Custom	CS100FR	SDC, HP

Traction Profiles: SDC—Stainless Steel Studs & Drainage Channels or HP-High Profile

AMS[®] Value Added

Options include:

- 27 Color Choices
- Embossed Text
- Embossed Logos
- Hazard Identification
- Red Zones
- Glow-in-the-Dark
- 5 Traction Profiles
- Beveled Edges
- *See Page 7*

AMS[®] Hybrid Drill Floor Traction Mat Packages

As the drilling industry continuously innovates so does AMS[®]. This proven combination of CS100FR Rotary Table + TC90FR Traction Matting for all other drill floor areas (excluding pipe racking areas). The Hybrid Package offers cost savings without comprising quality, durability and safety.



Hybrid Highlights

- Polymer Blends Engineered for Drill Floors
- Stress & Impact Resistant
- Extreme Durability
- Resistance to Chemicals, Corrosion & Diesel
- Outlasts the Competition
- High Traction Non-Slip Surface
- AMS[®] Color Sync

We did not re-invent the wheel, we just made it better!



Setback / Pipe Racking Pads

Absorb the impact, facilitate positive drainage with our most durable polyurethane. These pads have been proven to improve efficiency of tripping, reduce lost time by removing unnecessary risks. Choose CS150 or CS150FR (fire retardant). Added features include:

- Assist in protecting tool-face and threads.
- Higher COF than timber or grating
- Withstands the compression and weight of drill pipe & smaller collar stands

Standard Setback /Pipe Racking Pads includes:

- Fluid channels molded in one direction for easy housekeeping
- Non-skid aggregate coating
- AMS[®] Color Sync or Basic
- Chemical, Corrosive and Diesel Resistance

AMS [®] Setback /Pipe Racking Pads	Thickness (mm)	Polymer Type
SB-CS150-Thickness	32, 38 & Custom	CS150
SB-CS150FR-Thickness	32, 38 & Custom	CS150FR
SB-CS2500FR-Thickness	32, 38& Custom	CS2500FR



Drainage Mats

Built for industrial areas, drill floors, marine environments and heavy commercial applications. Easily provides a safe surface in wet environments by allowing fluids to drain all with a high traction surface. Drainage Mats include:

- Large Openings for all viscosities to drain freely
- Lightweight
- Built-to-order any size or shape
- Thickness: 13mm and up

Ideal around Rotary Tables, eliminating uneven surfaces

AMS [®] Drainage Mats	Polymer Type	Traction Profile
DM-TC90-LP	TC90	Low Profile
DM-CS100-LP	CS100	Low Profile



FRP—Fiberglass Reinforced Polyurethane

Let us design a solution for your application or project or choose from the following:

Hole Covers

AMS[®] Hole Covers are lightweight, durable and assist in preventing dropped tools through exposed holes. The FRP Hole Covers are made to any shape and dimension.

T-Mats

Fill in long and narrow voids such as Smart Racker systems. AMS[®] T-Mats create both a safe and level surface for foot traffic. They are lightweight and built-to-order to any dimensions.

AMS [®] FRP Mats	Dimensions (L x W x H)
FRP-HC	
FRP-TM	
FRP-Custom	

Polyurethane Options

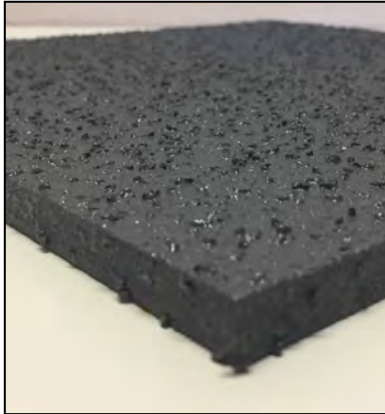
AMS[®] offers a range of polymers designed for drill floors. Whether highly corrosive to heavy industrial to general commercial use. Polyurethanes are matched with customer specifications and project application.



High Traction Surface Options



Choose from four (4) different traction profiles. Each design provides a high co-efficient of friction for any footwear in the harshest environments.



Industrial Payload Pads

Identify safe landing areas for equipment, containers or personnel. The non-slip surface combined with high visibility ensures efficient and safety lifting operations.

- Beveled Edges
- Easily interlocked with molded puzzle cuts
- Portable or permanent solution
- Choose between stock sizes or built-to-order any size, shape or thickness

AMS [®] Stock Payload Pads	Thickness (mm)	Polymer Type	Width (mm)	Length (mm)	Traction Profile
PP-TC90-3-SLAO	13	TC90	2800	3000	Speed Liner Aluminum Oxide
PP-TC90-1-SLAO	13	TC90	2800	1000	Speed Liner Aluminum Oxide
PP-TC90-Thickness-SLAO	13 or 19	TC90	500	500	Speed Liner Aluminum Oxide



Industrial Anti-Fatigue Mats

Research has proven standing for long periods will cause serious health issues. AMS[®] Industrial Anti-Fatigue Mats allow personnel to be less fatigued, perform for longer periods all the while creating a favorable work environment.

- Increase circulation
- Reduce stress on legs and feet
- Alleviate back and neck pain
- Choose between stock sizes or built-to-order any size, shape or thickness

AMS [®] Stock Industrial Anti-Fatigue Mats	Polymer Type	Thickness Options (mm)	Traction Profile Options
IAF-TC55-Thickness-LLP	TC55	15, 19, 25	Large Low Profile
IAF-TC55-Thickness-LP	TC55	15, 19, 25	Low Profile



Drill Floor Refurbishing

Extend the life of your matting. AMS[®] can transform certain Drill Floor matting with our exclusive method. There are two (2) options to choose from. DF-R includes: reshaping to original dimensions, resurfacing polymer, paint and non-skid. The DF-R-SSS is a complete overhaul which includes all the above plus the removal and replacement of stainless steel studs.

AMS [®] Rotary Table Refurbishing	
DF-R	Rebuild, Re-paint, Non-Skid Coating
DF-R-SSS	Rebuild, Re-paint, Non-Skid Coating & Stainless Steel Stud Overhaul
Refurbish your rotary table mat? Let AMS [®] extend the life of your Rotary Table	

Characteristics

- Stress & Impact Resistance
- Extreme Durability
- Chemical Resistance
- Corrosive Resistance
- Outlasts/Outperforms
- Non Skid Surface
- Fire Retardant

Benefits

- Promote Safety
- Shape with Curves/Angles
- Flexes, Twists and Bends
- AMS[®] Color Sync
- Protruding Objects easily incorporated
- Any Shape
- Any Size

Installation Advantages

- Install with Minimal Labor
- Portable or Permanent
- Seamlessly Create Level Foot Paths over uneven or multiple surfaces
- Install at Sea, In Snow/Rain with out interruption to Operations or Areas
- Install on Any Surface

AMS[®] Value Added Options:

- 27 Color Choices
- Embossed Text
- Embossed Logos
- Hazard Identification
- Red Zones
- Glow-in-the-Dark
- 6 Traction Profiles
- Beveled Edges

Drill Floor Custom Solutions

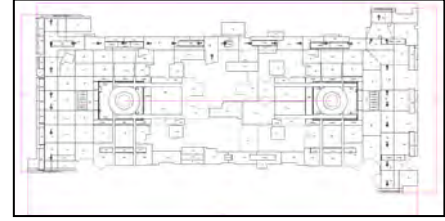
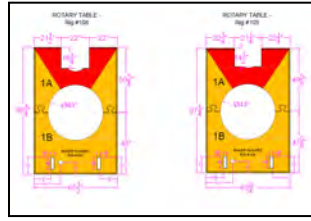
All AMS® Traction Matting can be built-to-order. **Its as easy at 1-2-3-4.**

1. Dimensions

Whether you attach a simple dimensional sketch OR the preferred method of an AutoCAD drawing, we can work with both. Need some help

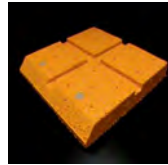
Call us at **1-403-910-1492**

Email Sales@AdvancedMatSystems.com



2. Traction Profiles

AMS® has designed some of the highest COF (co-efficient of friction) profiles available today, providing exceptional traction. Our profiles are molded in the pads and with an added aluminum oxide non-skid coating. Choose any of the following:



SDC
Stainless Steel Studs & Drainage Channels



HP High Profile
Multiple Lug Height Combination



LP Low Profile
Multiple Lug Height Combination



LLP Large Low Profile
Expanded Lug Height Combination

3. Polymer

AMS® Polymers	TC-55		TC-90FR		CS-100FR		CS150-FR		CS-2500FR	
Description	This ergonomic blend combines high tear strength and elongation. Excellent chemical resistance. Good grease and oil resistance		A proven blend which combines high strength, elongation with excellent chemical resistance.		A durable and versatile blend for areas where potential exposure to impacts and corrosive fluids are primary.		Durable polymers designed for high impact resistance and compressive strength.		Developed to address the changing synthetic drilling fluids. Offers increased chemical & cut resistance with high compressive strength.	
Application	Anti-Fatigue relief for work stations, drillers consoles and stationary work place		Ideal for drill floors, monkey boards, escape/egress routes, stair treads, walkways, Heli-decks, etc.		Ideal for rotary tables areas		Setback/ Pipe Racking areas of the rig floor where there is an inherent risk of impact		Areas of the rig floor in which designer fluids are utilized	
	Metric	Imperial	Metric	Imperial	Metric	Imperial	Metric	Imperial	Metric	Imperial
Hardness ASTM 2240-85	50-60 Shore A		75-85 Shore A		75-85 Shore A		80-90 Shore A		Custom	Custom
Tensile Strength@Break* ASTM 412 D - Die C	11.2 MPa	1624	33.3 MPa	4835 psi	36.3 MPa	5261 psi	32.3 MPa	4690 psi		
% Elongation@Break* ASTM 412 D - Die C	495		726		687		465			
Tear Strength* ASTM D 624	63.1 kN/m	360 lbf/in	131.7 kN/m	752 lbf/in	149.6 kN/m	854 lbf/in	153.4 kN/m	876 lbf/in		
Fungus Resistance	non-nutrient		non-nutrient		non-nutrient		non-nutrient			
Reparability	good		excellent		excellent		excellent			
Service Temperatures	-40°F to 200°F	-38°C to 93°C	-40°F to 200°F	-38°C to 93°C	-40°F to 200°F	-38°C to 93°C	-40°F to 200°F	-38°C to 93°C		
% Water Absorption	0.01		0.01		0.01		0.01			

4. Value Added Options

Safety is visual. AMS provided a number of highly visual options to increase safety in the dangerous areas. All options are molded into the pads ensuring longevity and quality. Choose from the following:



Beveled Edges



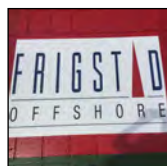
Hazard ID / Red Zone



Glow-In-The-Dark



Embossed Text



Logos



27 Colors



Symbols



Puzzle Locks

ARCTIC PAD® Product Line

The Arctic Pad is a heated version of the Advanced Mat System. This portable or permanent, solution is a turnkey de-icing or anti-icing solution for any operation or application. These patented heated mats can be built to any shape or size and are available in all thickness starting at 23mm.

Seamlessly increase safety by providing firm footing in cold, Arctic and harsh environments. Choose from some of our stock Arctic Pad® configurations or built-to-order.



ARCTIC PAD®



ARCTIC PAD'S & Walkways

Heavy-duty, heated, polymer traction matting. This plug and play system will effortlessly modernize any area or operations, exposed to snow, ice and sea spray. Arctic Pad® provides both a durable and reliable non-slip surface in cold environments:

- Stock Thickness 23mm, Grey in Color, 3 M of Cold Lead, Lateral Mounting Holes
- Stock wattage/m2 of 465 (average) @240 VAC
- Easy installed over multiple/uneven surfaces creating smooth transitions

AMS® Stock Arctic Pads	Thickness (mm)	Polymer Type	Available Widths (mm)	Available Lengths (mm)	Traction Profile
AP-SC1677-Width-Length-LP	23	XP	750, 900, 1000, 1500	600, 750, 900, 1000	Low Profile
AP-TC90-Width-Length-LP	23	TC90	750, 900, 1000, 1500	600, 750, 900, 1000	Low Profile

Built-To Order

- Any size, shape, thickness, with curves, angles or design around protruding objects
- Choose polymer, heat output, traction profile or beveled edges
- Don't forget to choose your color, embossed text, logos, glow-in-the-dark markings, etc.



ARCTIC Treads

Stairways are one of the highest risk areas for slip, trips & falls. Arctic Treads provide safe, durable and reliable footing in cold environments exposed to snow, ice and sea spray. These heated treads assist in protecting all persons for slips, trips and falls.

- Stock thickness 23mm, Grey in Color, 2 M of Cold Lead, Lateral Mounting Holes
- Stock wattage/m2 of 465 (average) @240 VAC
- Easy installed on any surface, in the rain and at sea without interruption of operations

AMS® Stock Arctic Treads	Thickness (mm)	Polymer Type	Depth (mm)	Available Width (mm)	Traction Profile
AST-SC1677-200-Length-LP	23	XP	200	600, 750, 900, 1000, 1200	Low Profile
AST-SC1677-250-Length-LP	23	XP	250	600, 750, 900, 1000, 1200	Low Profile
AST-SC1677-300-Length-LP	23	XP	300	600, 750, 900, 1000, 1200	Low Profile

Built-To Order

- Any size, shape, thickness, with curves, angles or design around protruding objects
- Choose polymer, heat output, traction profile or beveled edges
- Don't forget to choose your color, embossed text, logos, glow-in-the-dark markings, etc.



ARCTIC Industrial Anti-Fatigue Mats

Researchers have proven standing for long periods will cause serious discomfort to the body. Arctic Industrial Anti-Fatigue Mats allow personnel to be less fatigued, perform for longer periods while on a heated surface. Create a favorable work environment in cold climates.

- Increase circulation
- Reduce stress on legs and feet
- Alleviate back and neck pain
- Grey in Color, 3 M of Cold Lead, Lateral Mounting Holes
- Stock wattage/m2 of 465 (average) @240 VAC

AMS® Stock Arctic Industrial Anti-Fatigue Mats	Polymer Type	Thickness (mm)	Traction Profile
AIAF-TC55-23-LLP	TC55	23	LLP-Large Low Profile
AIAF-TC55-23-LP	TC55	23	LP-Low Profile
LP- Low Profile, LLP-Large Low Profile			

What is the ARCTIC PAD®?

The Arctic Pad® is an assembly of a industry proven components and materials.



Heat Source

Arctic Pad® utilizes self-regulating heat trace cable. Wattage and spacing are chosen based upon ambient temperatures and client requirements. Each heat trace cable has its own approvals as per its manufacturer.



Curves

AMS© manufactures matting with curves, angles and odd shapes ensuring for a seamless fit.

Polyurethane

AMS© offers a range of polymers which are designed for different applications. Whether highly corrosive to heavy industrial to general commercial use. Polyurethanes are matched with customer specifications and project application. This material provides high thermal mass (heat retention) allowing for cycling which provides energy savings.



Cold Lead

The cold lead is cut to any length. The connection of the heat trace cable and the cold lead cable is within the matting, enveloped by polyurethane, sealing from any and all elements. Each cold lead cable has its own approvals as per its manufacturer.



Openings

AMS© mats can include openings of any shape or size, allowing for pads to be placed anywhere.

High Traction Surface

Choose from six (6) different traction profiles. Each design provides a high coefficient of friction for any footwear, applications or areas.



Characteristics

- Stress & Impact Resistance
- Extreme Durability
- Chemical Resistance
- Corrosive Resistance
- Outlasts/Outperforms
- Non Slip Surface

Benefits

- Promote Safety
- Shape with Curves/Angles
- Flexes, Twists and Bends
- AMS© Color Sync
- Protruding Objects easily incorporated
- Any Shape
- Any Size

Installation Advantages

- Install with Minimal Labor
- Portable or Permanent
- Seamlessly Create Level Foot Paths over uneven or multiple surfaces
- Install on Any Surface
- Ave install 5 min/SQM
- Install at Sea, In Snow/ Rain with out interruption to Operations or Areas

AMS© Value Added Options include:

- 27 Color Choices
- Embossed Text
- Embossed Logos
- Hazard Identification
- Red Zones
- Glow-in-the-Dark
- 6 Traction Profiles
- Beveled Edges

The ARCTIC PAD® Difference

Don't waste time and money on costly installs dependent upon weather. Did you know the average mechanically install is 5 minutes/SQM in any weather on land or at sea with The Advanced Mat System®.

SEE the ARCTIC PAD® Difference	Epoxy/Concrete & EHT	Metal Cassettes	Arctic Pad®
PRODUCT DESIGN CAPABILITIES			
Easily Designed to Any Size, Shape, Curve, Depth			
Flexible, Bends, Twists (extremely important for marine operations)			
Heat Output – designed to each client's specifications			
Impact Resistant, Chemical & Corrosion Resistant			
Can be designed for anti-icing and de-icing			
Designed to include deck penetrations or objects			
Thickness Options starting at 23mm and up			
EASE OF INSTALLATION			
Portable & Permanent Solution			
Installs easily on changing elevations, creating no trip hazards			
Minimal Electrical Labor required on-site			
Mechanical Installs on average is 5 minutes/M ² (ex. 200 M ² =40 Minutes)			
Areas of install = out of service / not accessible during installation			
SAFETY			
National Floor Safety Rated Co-efficient of Friction Tested			
Designed to Prevents Slips, Trips & Falls in all Seasons & Environments			
Electrical Approvals & Recommended Certifying Organizations Approvals			
CUSTOMIZATION			
Traction Profile Options and /or Beveled Edges			
Color Choices			
Embossed Text (i.e., safety slogans, id, etc.), Logos, Symbols			
Photo Luminescent Markers (glow in the dark)			
LONG TERM BENEFITS			
Daily Fuel Savings due Battery Effect – Long-term retention of heat (with control panel)			
Longevity – Proven Life Span over 7 years			
Easily upgraded with Replacement pieces			

Design, Electrical Engineering & Control Systems

Each winterization project may include detailed drawings, specifications and/or control & monitoring systems. This multi-step comprehensive process allows for forethought and planning, which lead to a successful start, middle and completion of any project.



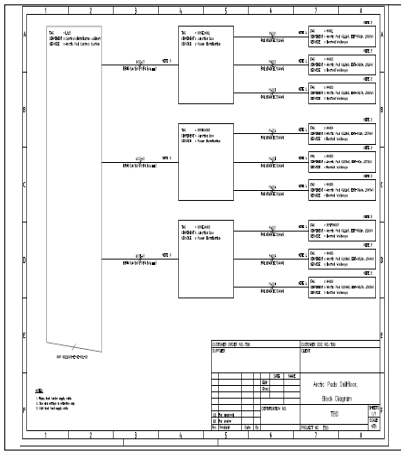
Purpose Built Design

Our process is tailored to each project and can include any or all of the following:

- Establishing client requirements/risk assessment
- Classification society alignment
- Operating atmospheres / environments
- On-site equipment capabilities
- Preliminary design
- Detailed design
- Production planning
- Production

AMS[®] solutions are built-to-order. Our experienced staff will work with you to design either a single mat or a complete package for your operational needs and environment. Ensure your project is on time and on cost. The ideal format to provide is an AutoCAD drawing or dimensional sketch.

Did you know that any of our traction mats can be made into heated matting? See our exclusive product line called Arctic Pad[®] at arcticpad.com



Electrical Engineering

Arctic Pad[®] Systems or Winterization Projects may require electrical engineering. This service ensures power distribution is balanced, efficient and optimized with The Advanced Mat System[®]. We work to incorporate on-site existing electrical capabilities along with current designs. We can also coordinate with

- your electrical engineers
- we can recommend electrical engineering firms around the globe
- we can assist by utilizing the firms we use on many projects and general contract these services as needed

Electrical engineering rates are based on each project scope of work.

Contact us today at 1-403-910-1492 for further details.



Control & Monitoring Systems

A control & monitoring system allows for ease of operation and maximum efficiency for any combination of Arctic Pads[®] and/or our Winterization Product Line. The can be a simple on/off switch to AIMS.

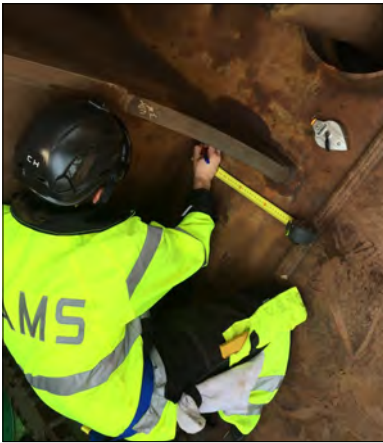
AIMS—Autonomous Intelligent Monitoring System

Intelligent control & monitoring system can include panels, HDMI screen, RTD sensors, etc. A program design with zone cycling adds to power savings due to Arctic Pad[®] high thermal mass properties. Each system is tailored to customer specifications.

Onsite Services & Support

Our global on-site services and support allows for the very best in customer service for our clients, regardless of whether it's a vessel, land based drilling operation or offshore wind platform.

We can have boots on the ground or sea to assist with design, installation supervision and commissioning of your project.



Onsite Survey

As matting is custom built to each client's specifications, it is crucial we have accurate dimensions. In the event clients are not comfortable confirming dimensions from AutoCAD drawings, we offer on-site surveys. Whether you require a rotary table, drilling platform, Heli-deck, anti-slip egress route or stair treads, a member of our technical team can provide an on-site survey anywhere in the world.

A site survey allows for an area inspection, gathering of technical information, dimensions and electrical placements for an accurate design or an estimate. Surveys help to determine precise locations, access, ideal orientation, jib/control panel placements, location of obstacles, etc. The type of site survey and the best practices required depend on the nature of the project.

On-site surveys are highly recommended for Arctic Pad® Projects as these heated mats cannot be altered, modified and/or cut in anyway. Measure twice - cut once!



Installation Supervision

Utilizing your personnel or a third party, our experienced service managers can supervise and direct your crew through the complete installation of The Advanced Mat System® equipment package. This assures the installation work is according to both the customer and AMS® specifications. Installation supervision is normally followed immediately by commissioning the system, thus enabling the customer to avoid costly delays and expenses due to discontinuity in the project.

Traction Pads are very simple to install and affix to almost any surface. See full installation details on our website www.advancedmatsystems.com

Arctic Pad® requires proper handling, storage and installation procedures for optimal performance as they encompass an electrical component and cannot be altered in any way. On-site supervision ensures proper procedures are followed for both mechanical and electrical installation.



Commissioning

The commissioning procedure includes a process to check, inspect, adjust, test, document and verify a fully functioning systems as per client requirements and specifications. Arctic Pad® requires commissioning for AMS® certification and warranty. As Arctic Pad® is an electrically heated system, thus requiring proper documentation of electrical installation. Commissioning includes verifying electrical hook-up and full training to your key personnel on the control and monitoring systems.

Commissioning will usually immediately follow the mechanical installation of Arctic Pad®, overlapping with the electrical hook-up. This process is in place to avoid costly delays and expenses due to discontinuity of the project.



AMS
Advanced Mat Systems



AMS® Drill Floor Solutions